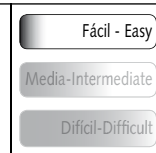
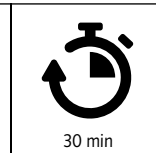
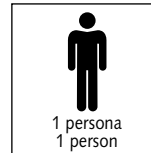
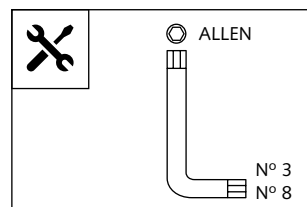


## PLACA FRONTAL PARA - FRONT PLATE FOR - FRONTPLATTE FÜR DUCATI SCRAMBLER



**Ref.: 9177 J**  
(color negro / black colour)

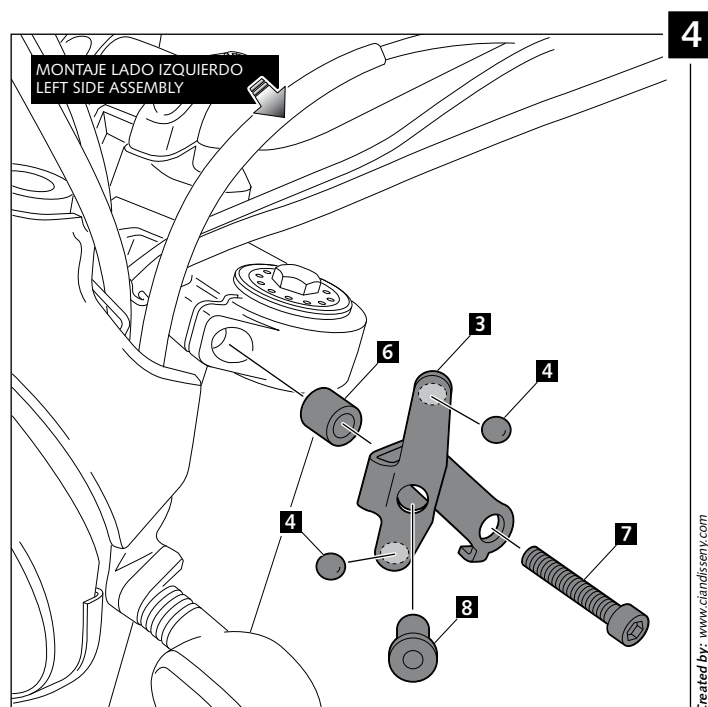
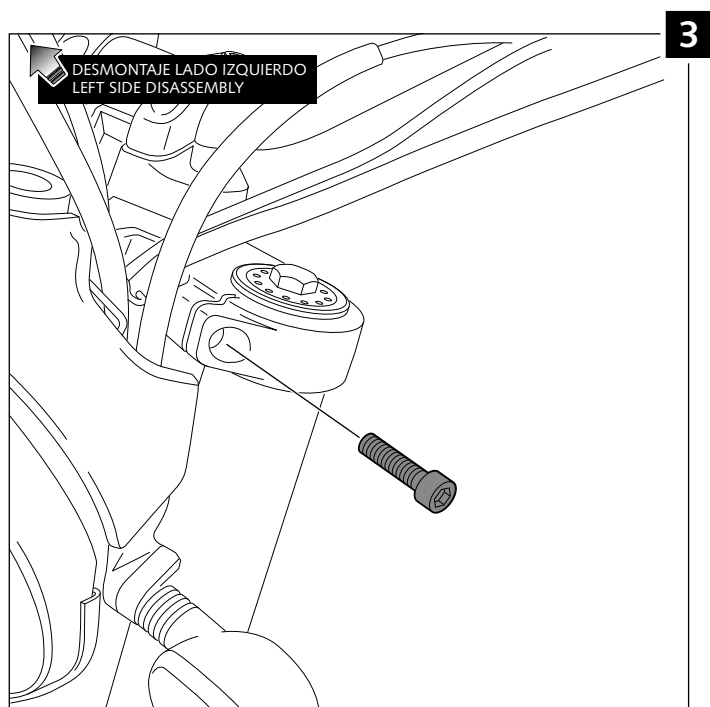
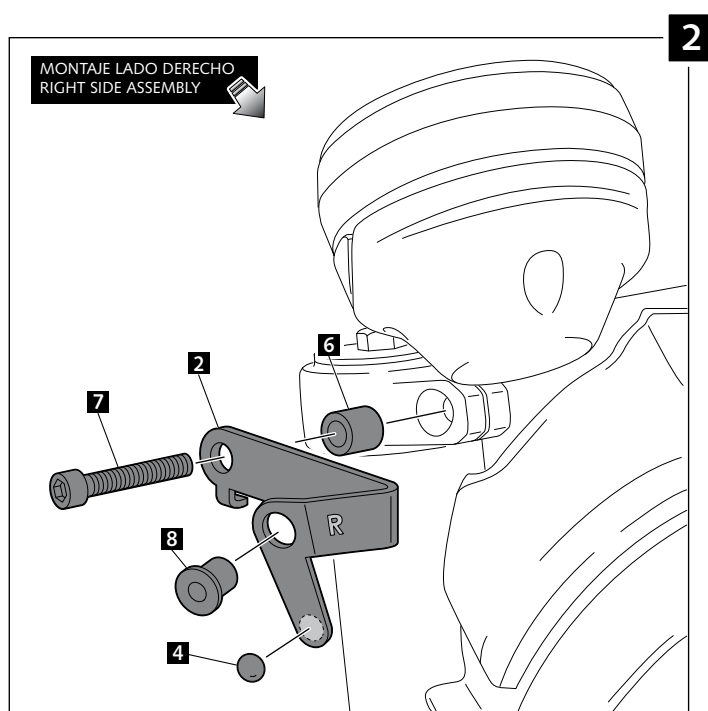
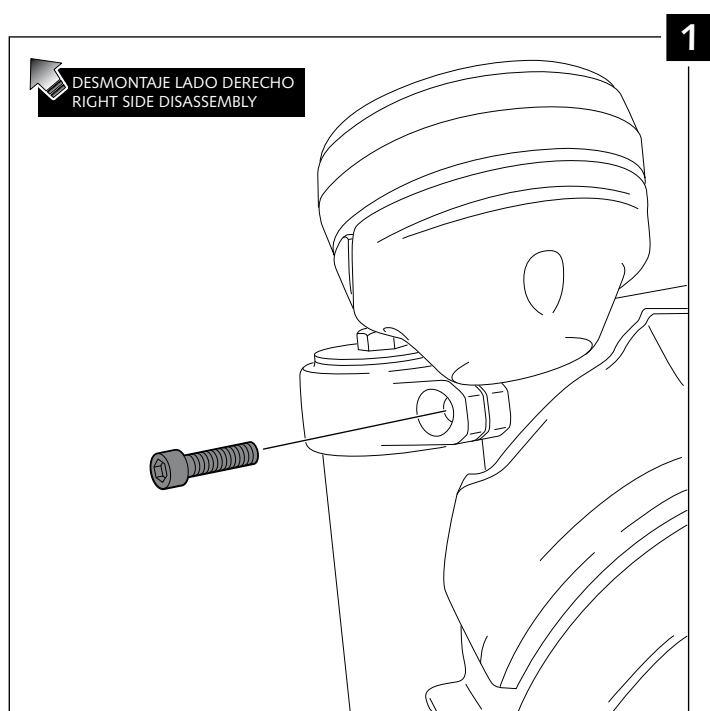
**Ref.: 9177 C**  
(color carbono / carbon look)



ID.	PIEZA / PART	DESCRIPCIÓN	DESCRIPTION	QTY.
1		Placa frontal ABS	ABS front plate	1
2		Soporte metálico derecho	Right metal support	1
3		Soporte metálico izquierdo	Left metal support	1
4		Separador de silicona Ø8x2mm (se suministra montada con las pieza 1)	Ø8x2mm silicone tear (supplied already mounted on item 1)	3
5		Separador de silicona Ø12,5 x 4mm	Ø12,5 x 4mm silicone tear	1
6		Casquillo Øint. 8,5 X Øext. 13 X 12 mm	Øint. 8,5 X Øext. 13 X 12 mm arrowhead	2
7		Tornillo Allen M8x35 DIN912	M8x35 DIN912 Allen screw	2
8		Silentblock M5	M5 silentblock	2
9		Tornillo Allen M5x15 Ø11 ISO7380	M5x15 Ø11 ISO7380 Allen screw	2
10		Arandela de Nylon M5X1	M5X1 Nylon washer	2
11		Tapón tornillo M5 ISO 7380	M5 ISO 7380 Allen screw cap	2
12		Ribete autoadhesivo longitud de 210mm, 8mm, espesor 5mm	Self-Autoadhesive Trim length 210mm , 8mm, thickness 5mm	1
13		Kit adhesivos	Stickers set	1

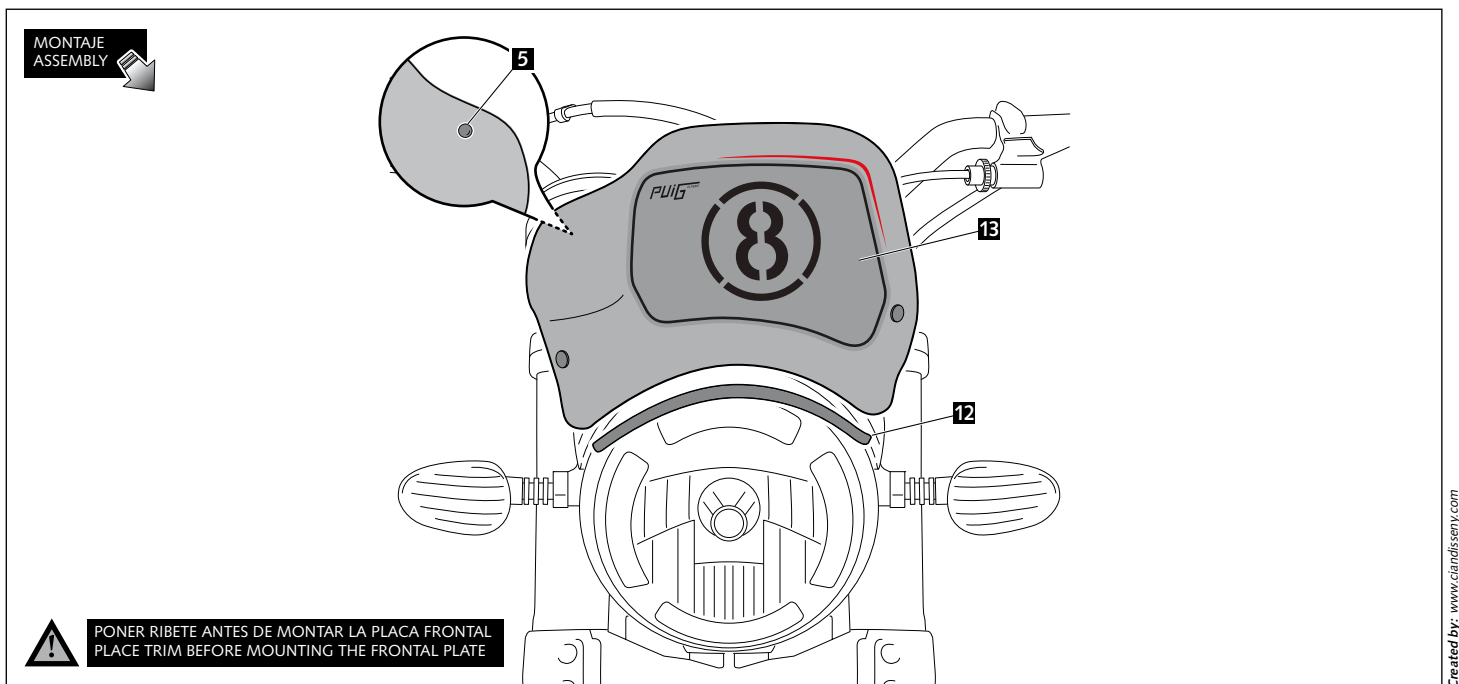
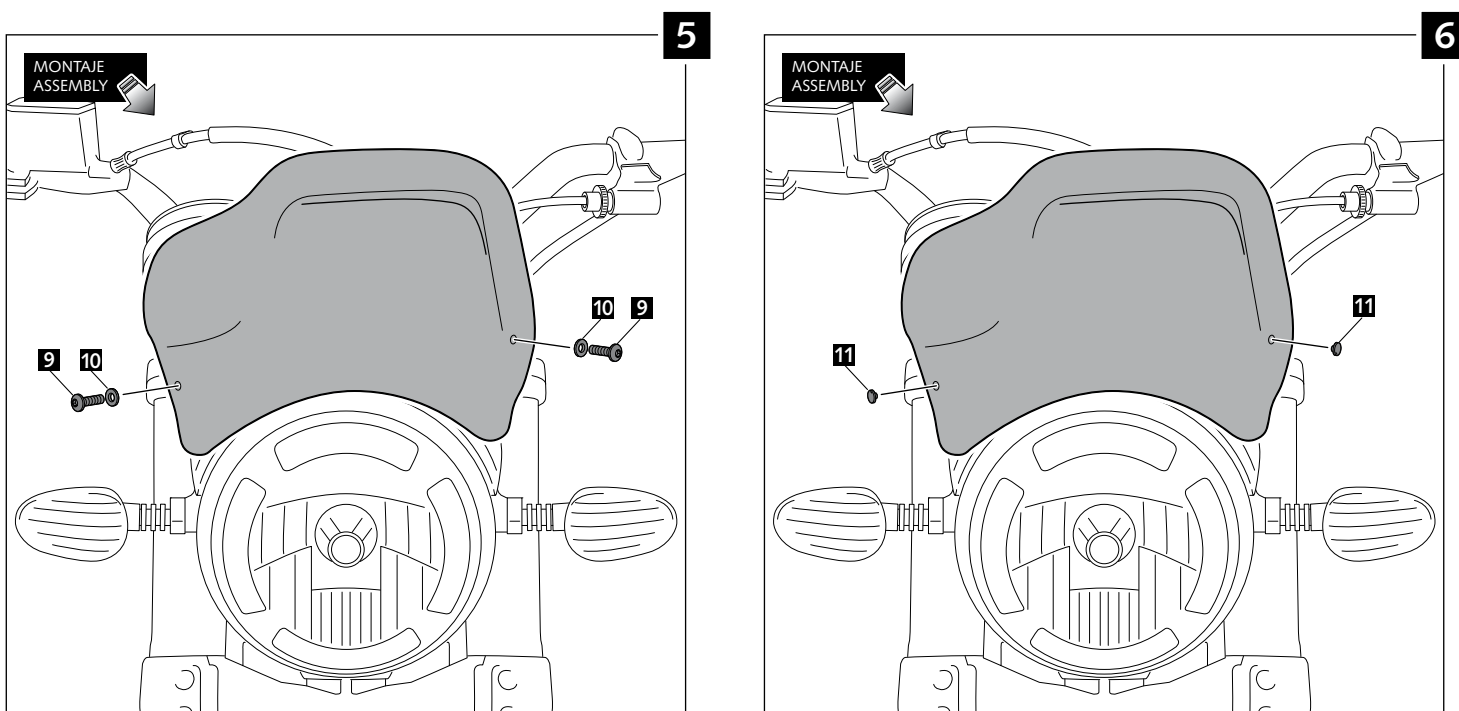
PLACA FRONTAL PARA - FRONT PLATE FOR - FRONTPLATTE FÜR  
**DUCATI SCRAMBLER**

INSTRUCCIONES DE MONTAJE - MOUNTING INSTRUCTIONS - MONTAGEANLEITUNG



PLACA FRONTAL PARA - FRONT PLATE FOR - FRONTPLATTE FÜR  
**DUCATI SCRAMBLER**

INSTRUCCIONES DE MONTAJE - MOUNTING INSTRUCTIONS - MONTAGEANLEITUNG



**⚠ PONER RIBETE ANTES DE MONTAR LA PLACA FRONTAL  
 PLACE TRIM BEFORE MOUNTING THE FRONTAL PLATE**