



● Thank you for purchasing our **Gear Indicator**, before operating the unit, please read the instruction sheets and retain them for the future reference.

Notice

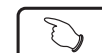
1. The meter works for **DC 12V** power.
 2. For installation, please follow the steps described in manual. Any damage caused by wrong installation shall be imputed to the users.
 3. Don't break or modify the wire terminal. To avoid a short circuit, do not pull the wires when installing.
 4. Do not disassemble or change any parts.
 5. The interior examination or maintenance of the instrument should be executed by our professionals only. Opening the instrument will void the warranty.
 6. While riding the vehicle, do not attend to change the setting of the instrument to avoid injuries to yourself or others.
- ※ **The meter only work on motorcycles with digital speed / RPM signal (TTL SIGNAL 0-5V)!**

MARK MEANING:

NOTE Some procedures must be followed to avoid damage to the instrument.

WARNING! Some processes must be followed to avoid injuries to yourself or others.

CAUTION! Some procedures must be followed to avoid damages to the vehicle.



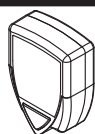
Press the Button one time



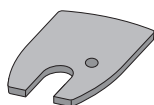
Press the Button 3 seconds

1 Accessories

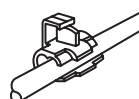
1 Meter X1



2 Velcro X1

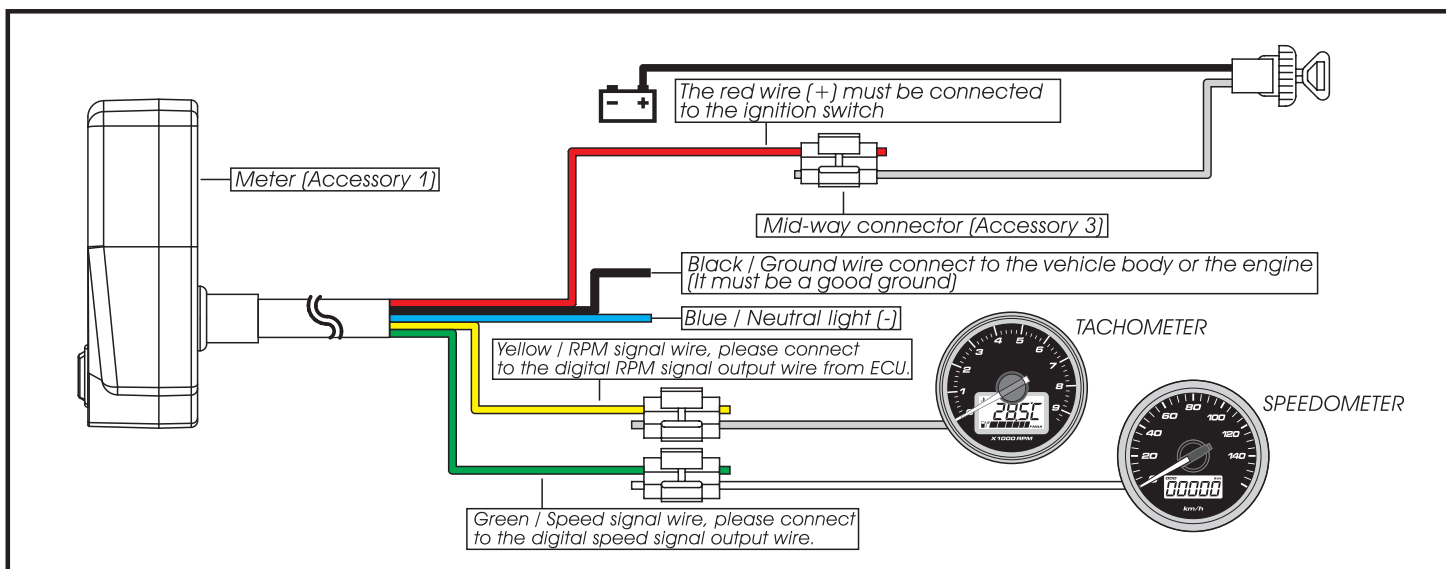


3 Mid-way connector X5

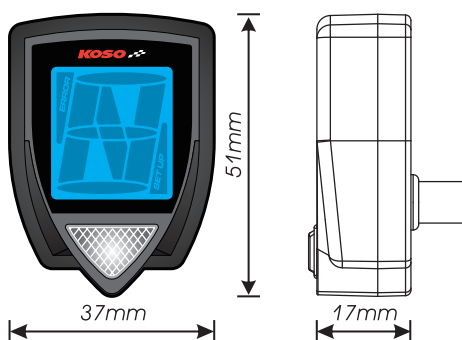


NOTE Please contact the local distributor if the items listed are not the same.

2 Wiring installation



3 Functions

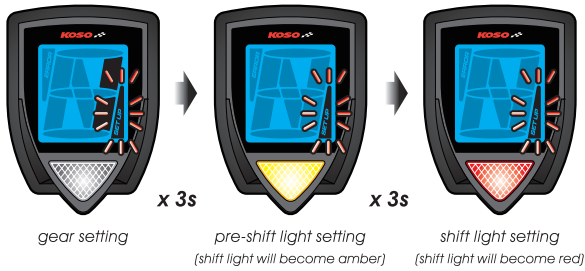


- Gear meter Display range: N, 1, 2, 3, 4, 5, 6, 7
- Effective voltage **DC 12V**
- Effective temperature range $-10 \sim +60^{\circ}\text{C}$ ($14 \sim 140^{\circ}\text{F}$)
- Meter standard JIS D 0203
- Meter size 37 X 51 X 17mm
- Meter weight Around 51.3g

NOTE Design and specification are subject to change without notice!

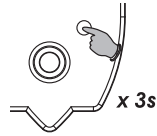
NOTE Please be advised that when the speed is too low, then the meter might not be able to detect the signal of the gear.

4-1 Setting screen instruction



- To enter the gear setting mode, press and hold the button for 3 seconds. Press again the button for 3 seconds in order to enter the pre shift light setting (button will become amber) and another time for 3 seconds to set the shift light (button will become red)

NOTE If no action has been taken after 30 seconds, the meter will automatically go back to the main screen.



4-2 The gear & shift light setting

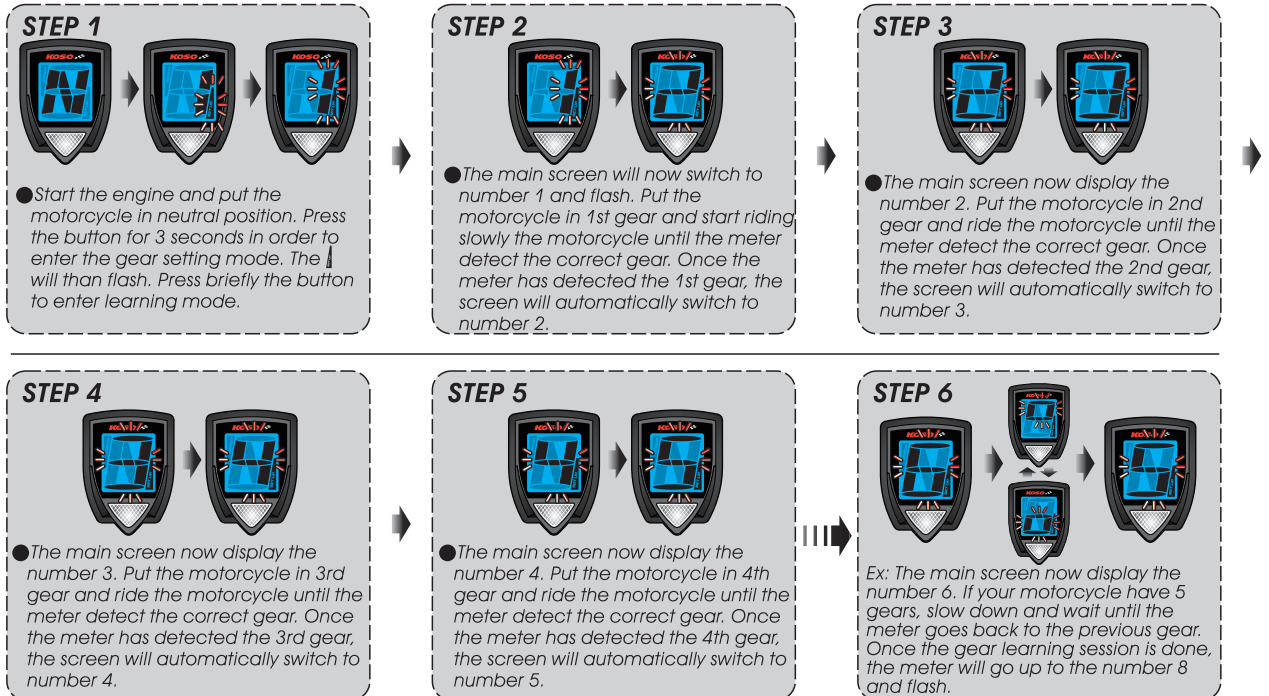
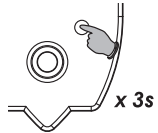


- If the meter can't detect the current gear, the meter screen will indicate --- and flash.



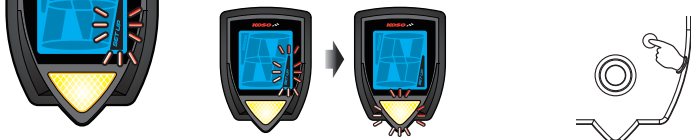
Gear learning setting

WARNING! To avoid improper gear reading, make sure the motorcycle is in neutral position before entering the gear setting mode.

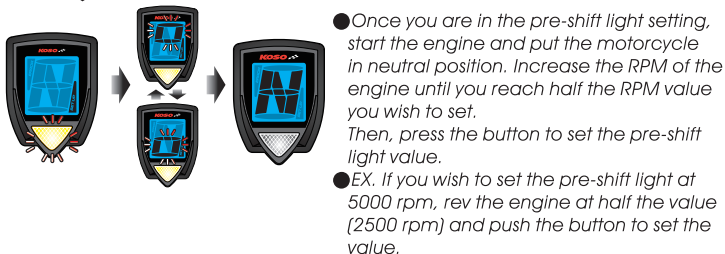


Pre-shift light setting

- Put the meter in pre-shift light setting (see point 4-1).



The shift light will now become amber to indicate you are in the pre-shift light setting.



Shift light setting

- Press the meter in shift light setting (see point 4-1). The shift light will now become red to indicate you are in the shift light setting.

